

Reliable

Four-Channel

Durability

Applicable Models: DJI M400

Enables precise, visible, and flexible aerial delivery with split design for unobstructed vision and multi-channel payload deployment.

Applications

Firefighting

Delivery of fire retardant or suppression devices

Rescue

Delivery of equipment or aid to hard-to-reach areas

Emergency Response

Deployment of critical supplies during disasters

Power Maintenance

Transport and placement of small tools or materials

Specification

- Dimensions: 125 × 117 × 60 mm
- Weight: 430 g
- Interface / Mounting Port: SKYPORT V2.0 / E-PORT / TYPE-C
- Control / Remote Compatibility: PSDK
- System Power: 20 W
- Operating Temperature: -20°C to +60°C
- Channels: 4
- Control Mode: Independent channel control, select any channel or one-key full release
- Control Range: Same as drone communication/control range
- Status Feedback: Real-time channel status reporting
- Mounting Method: Quick-release belly-clamp
- Payload Capacity: 2.5 kg per channel
- Video Resolution: 1080P, 30 fps

Contact Us:

info@cici-tech.com

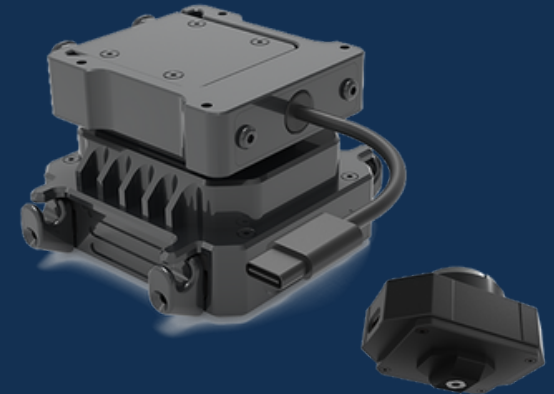
Split

Visible

Accurate

C.FT100P-400A

Visual Four-stage Dropping Kit



The C.FT100P-A is a split-design visual delivery system comprising a video capture module and a four-channel delivery module.

The video module mounts on the gimbal interface, transmitting live feed from under the drone to the remote controller.

The delivery module mounts under the drone body via Type-C connection, sharing the drone's PSDK interface. Each delivery channel can carry up to 2.5 kg, with four channels capable of sequential or simultaneous deployment.

Key Features:

- Split Design: Prevents payload from obstructing camera view
- Visible Video: Camera angle aligned with delivery target for accurate deployment
- Multi-Channel Delivery: Four channels can deploy sequentially or simultaneously
- Independent Channel Control: Select any channel or one-key full release
- Real-Time Feedback: Monitors status of each channel
- Quick-Release Mount: Belly-mount design for fast installation
- High Payload Capacity: 2.5 kg per channel

www.cici-tech.com