

multi-channel

Flexible

Lightweight

Applicable Models:
DJI M400

**Independent 10 kg
payload release with
precision laser
targeting**

Applications

Firefighting

Supports precise delivery of fire-retardant materials to target areas.

Rescue

Enables rapid and precise delivery of medical supplies and essential items to victims in emergency situations.

Powerline Maintenance

Supports safe and precise delivery of tools, sensors, or equipment to hard-to-reach powerline locations.

Logistics

Enables accurate airdrop of supplies in remote or hard-to-reach locations.

Specification

- Dimensions: 77 mm × 82 mm × 35 mm
- Weight: 300 g
- Interface Type: E-PORT v2.0
- Control Method: Pilot2
- System Power: 20 W
- Operating Temperature: -20°C to 60°C
- Number of Channels: 4

Features:

- Channel Control: Independent channel release; freely select item number or one-key full release
- Control Range: Consistent with drone communication range
- Tube Light Count: 8 RGB LED beads
- Installation Method: Belly screw mounting (compatible with third-party gimbal interface)
- Load Capacity: 10 kg per channel
- Laser Indicator: Supported
- Mounting Method: Supports manual quick loading/unloading without power



Contact Us:

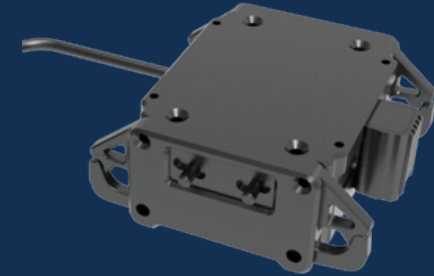
info@cici-tech.com

Precision

High-Payload

Stability

C.FT100P MAX
Dropping system with Warning Light



The C.FT100-A MAX dropping system delivers precise and reliable payload deployment for a variety of missions. Featuring a quad-module design with a total payload capacity of 24 kg, it allows the independent release of items up to 10 kg each. Its integrated targeting laser ensures accurate delivery, making it ideal for firefighting support, logistics distribution, and emergency response operations.

Key Features:

- High Payload Capacity: Supports up to 10 kg per channel with a total load of 24 kg, ensuring reliable performance for heavy-duty missions.
- Quad-Module Design: Four independent modules allow flexible and simultaneous deployment of multiple items.
- Precision Laser Targeting: Integrated laser ensures accurate delivery for firefighting, logistics, and emergency operations.
- Fast & Reliable Release: Efficient mechanical system enables quick and dependable payload deployment.

www.cici-tech.com