

Stable

Versatile

Efficient

Portable

Smart

Reliable

Powerful

Automatic

Durable

Applicable Models: DJI M4

# Extended 24-Hour Continuous Flight

## Applications

### Firefighting

The system assists firefighting operations with persistent aerial monitoring and lighting in hazardous areas.

### Rescue

It supports search and rescue missions by offering continuous airborne observation and guidance

### Law Enforcement

It enables law enforcement agencies to conduct extended surveillance and crowd monitoring safely and efficiently

### Lighting

The tethered system provides stable, long-duration aerial lighting for events, construction sites, and emergency operations

## Specification

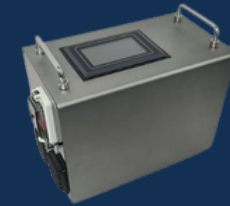
### Ground Unit

- Cable Length: 60 m
- Rated Output Power: 1200 W
- Torque Settings: 0–10 N, multi-level adjustable
- Cable Retract/Deploy Speed: 0–2 m/s
- Protection Features: Input overvoltage/undervoltage, output overvoltage/overcurrent/short circuit/over-temperature
- System Functions: Real-time adjustment of voltage, current, torque via touchscreen
- Weight:  $\leq 13$  kg
- Ingress Protection: IP55
- Dimensions: 350 × 270 × 200 mm
- Operating Temperature: -30 °C to 55 °C

### Airborne Unit

- Rated Power: 800 W
- Weight:  $\leq 120$  g
- Installation: Battery slot, tool-free, non-destructive
- Ingress Protection: IP54
- Output Voltage: 4S
- Protection Features: Short circuit, overload, over-temperature protection
- Input Voltage: 350–430 VDC

C.UTI-M4 Tethered System



The C.UTI-M4 tethered system provides long-endurance, fixed-point flight powered from the ground. Ideal for aerial lighting and real-time surveillance, it is compact, easy to operate, and highly portable. With automatic cable control, adjustable torque, and visualized settings, the UTI-M4 delivers stable, worry-free 24-hour operation.

## Key Features:

- **1200W Maximum Output Power** — Provides stable, high-capacity energy for prolonged, uninterrupted tethered flight.
- **Automatic Cable Management** — Fully automated retraction with adjustable torque for precise, safe cable handling.
- **Ceramic-Glazed Cable Exit** — Prevents cable wear, ensuring long-term durability.
- **Integrated Carry Handles with Flight Case** — Rugged, portable design for effortless transport and rapid deployment.
- **WeChat Mini Program Monitoring** — Real-time tethering status and system control from anywhere.
- **Direct-Drive Servo Motor with Feedback** — Vibration-resistant, high-precision operation ensures smooth, jam-free cable management.

## Contact Us:

info@cici-tech.com

[www.cici-tech.com](http://www.cici-tech.com)