

safe

seamless

Durability

Applicable Models: DJI M400

Delivers precise fixed-depth water sampling with intelligent safety features and seamless drone integration, ensuring reliable and efficient water collection.

Applications



Environmental Protection

Collect water samples safely from rivers, lakes, and reservoirs.



Water Conservancy

Precise monitoring and sampling for hydraulic projects.



Inspection & Testing

Accurate sampling for laboratories and field analysis.



Research & Monitoring

Scientific studies requiring reliable water collection at specific depths.

Specification

- Dimensions: 124 mm × 73 mm × 114 mm
- Weight: 745 g (module) / 1.3 kg (with water bucket)
- Interface / Mounting Port: SKYPORT V2.0 / E-PORT / TYPE-C
- Control / Remote Compatibility: Pilot
- Power Consumption: 30 W
- Operating Temperature: -20°C to +60°C
- Sampling Capacity: 1 L
- Control Range: Same as the drone's communication/control range
- Status Feedback: Working status / cable length
- Rated Tension: 35 N
- Mounting Method: Quick-release belly-clamp (buckle)
- PHUB Support: Yes
- Cable Length: 10 m
- Retraction Speed: 0.1 m/s (adjustable)
- Smart Functions: Automatic limit / Over-temperature / Short-circuit / Anti-twist / Emergency disconnection / Mechanical tension detection / Fixed-depth sampling

Contact Us:

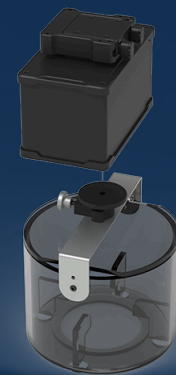
info@cici-tech.com

non-lethal

efficient

Stability

C.WS100P-400 Airborne Water Sample Collector



The C.WS100P-400 Water Sampling Device enables fixed-depth sampling and is equipped with emergency fuse, tension detection, and multiple intelligent protection functions.

It is specially developed for environmental protection, water conservancy, inspection, and sampling applications, ensuring safe, reliable, and precise operation.

Key Features:

- Enables fixed-depth water sampling for accurate data collection
- Emergency fuse and mechanical tension detection ensure safe operation
- Smart protections: automatic limit, over-temperature, short-circuit, anti-twist, and emergency disconnection
- 10 m cable length with adjustable retraction speed (0.1 m/s)
- Real-time feedback on working status and cable length
- Quick-release belly-mount design for fast and easy installation
- PHUB compatible, seamlessly integrated with drone control system
- Sampling capacity: 1 L
- Easy operation with Pilot software, automatically recognized by the drone

www.cici-tech.com